

AMBIUS

DUAL FASCIA BULKHEADS



*Black Oval Bulkhead
with Plain & Eyelid Fascia*

*Black Round Bulkhead
with Plain & Eyelid Fascia*

Available in White

PRODUCT & TECHNICAL INFORMATION

Models: All Include a plain and eyelid fascia

ABH14O2TB - Black Oval Bulkhead

ABH14R2TB - Black Round Bulkhead

Supply: 220-240Vac ~ 50Hz

Lumens: 1000LM

Ingress Protection: IP65

ABH14O2TW - White Oval Bulkhead

ABH14R2TW - White Round Bulkhead

Lamp: 14W Integrated LED

Colour Temperature: 3000K/4000K

Use: Indoor & Outdoor (Permanent use)

SAFETY WARNINGS

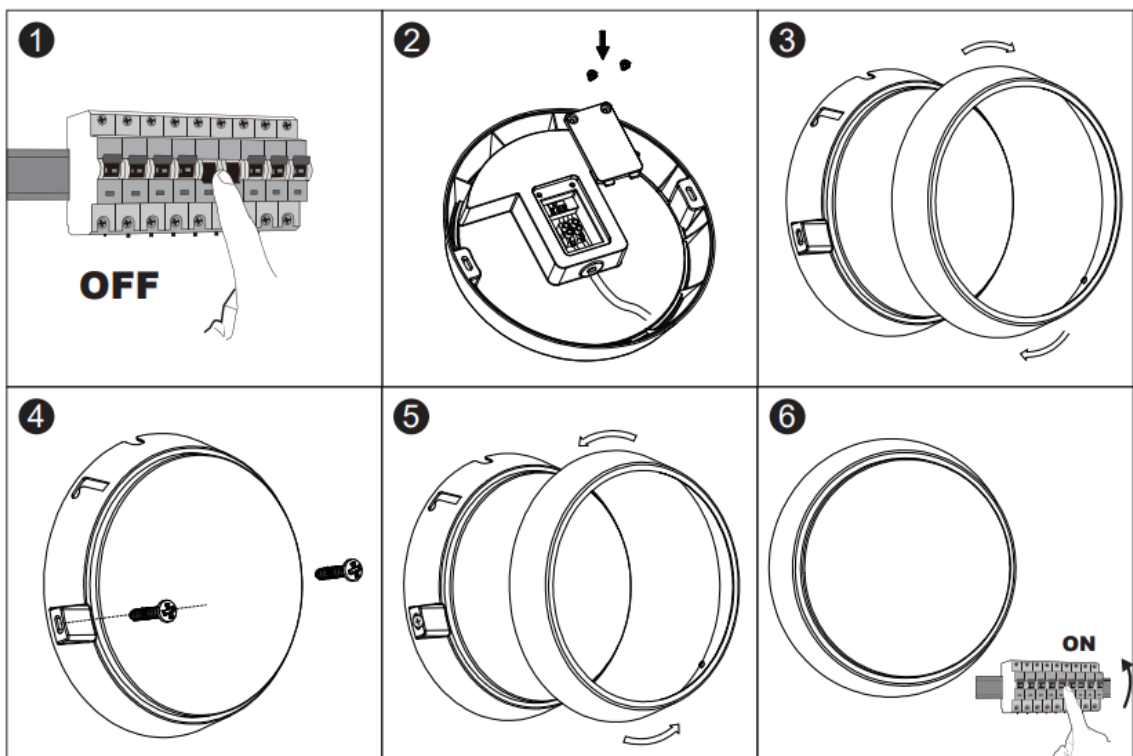
- Always read the instructions carefully before installation, failure to do this could result in damage to the product, property or harm to the installer.
- This product must be installed by a licensed electrician in accordance with the Australian / New Zealand Wiring Rules AS/NZS 3000.
- It is recommended that this product be used on a circuit board protected by an Earth Leakage Circuit Breaker or Safety Switch.
- Allow suitable ventilation around the light fitting and do not cover with any material.
- Do not immerse any part of the light fitting in water or any other liquids.
- Regularly inspect the light fitting to ensure that no damage has occurred, if damage is found cease use and replace.
- Do not attempt to modify this fitting in any way.
- The LED Driver and LED module is not replaceable.

INSTALLATION

Ensure power to the circuit is isolated for the duration of the installation.

Ensure all packaging materials are fully removed prior to installation.

1. Switch off the mains before commencing installation.
2. Remove the cover from the termination enclosure.
Note that this model has 4 screws on the termination cover.
Select the desired colour temperature
Please ensure that any connection made complies with New Zealand Electrical Wiring Rules AS/NZS 3000.
3. Remove Fascia
4. Mark appropriate drilling position and mount your bulkhead using screws provided.
5. Attach desired Fascia (Plain or eyelid)
6. Energise the circuit at the mains, your light should now turn on



CARE AND CLEANING

To clean wipe exterior with a damp cloth. Do not immerse in water.

PROOF OF PURCHASE

Please retain your purchase receipt for all warranty claims

WARRANTY

Your product is warranted against faults and manufacture when used in normal domestic use for a period of one year.

We undertake to replace this product at no charge if found to be defective due to a manufacturing fault during the warranty period. This warranty excludes damage caused by misuse, neglect, shipping accident, incorrect installation, or work carried out by anyone other than a qualified electrical service technician.

If your product fails to operate satisfactorily, please return it to the retailer from whom it was purchased to obtain a replacement product. You will need to produce satisfactory evidence of date of purchase. If the product is to be replaced (cannot be repaired) then that replacement will be of the same or similar product or accessory excluding packaging, instruction card etc.

In New Zealand product is covered by the Consumers Guarantee Act (1993). In accordance with the act consumers are advised that: The manufacturer does not undertake that repair facilities and parts are necessarily available for this product.

KEEP IN A SAFE PLACE FOR FUTURE REFERENCE

CDB  GROUP

New Zealand

PO Box 100-707

N.S.M.C

Auckland

Phone +64 (0)9 917 4000

Phone 0800 232 633

info@cdb.co.nz

Australia

PO Box 574

South Morang

Victoria, 3752

Phone +61 (0)3 9336 4423

Phone 1300 465 324

info@cdbgoldair.com.au