

# INSTALLATION & OWNER MANUAL

## SLIM CEILING LIGHT MULTIPOWER

**Models:** ACL250S2P-3T - Q5040670

ACL300S2P-3T - Q5040680

# AMBIUS



## SPECIFICATIONS

**Power Input:** 220-240V ~ AC 50/60Hz

**Adjustable Colour Temp:**

3000K/4000K/5000K

**Light Type:** Integrated LEDs

(not replaceable)

Dimmable

**Ingress Protection:**

IP65 for ceiling mount, IP44 for wall mount

**Use:** Outdoor Covered/Protected location

**Complies with:** AS/NZS 60598-2-1

**Power Output:**

ACL250S2P-3T - 10/13 Watts

ACL300S2P-3T – 15/18 Watts

**Lumens:**

ACL250S2P-3T - 1000/1300 Lumens

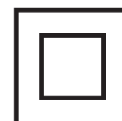
ACL300S2P-3T - 1500/1800 Lumens

**Beam Angle:** 100 degrees

**CRI Rating:** >80

**Estimated Lifespan:** L80 50,000hrs

**Double Insulated**

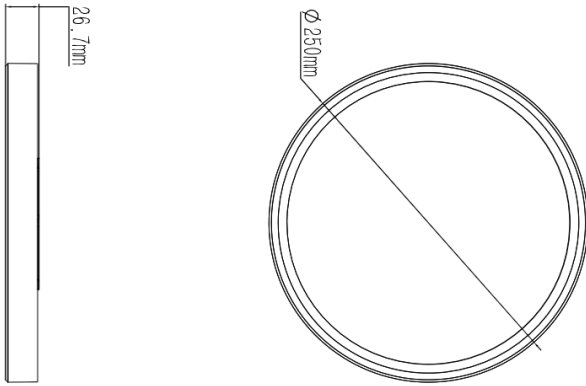


PLEASE READ AND UNDERSTAND ALL WARNINGS, CAUTIONS AND OPERATING INSTRUCTIONS IN THIS MANUAL BEFORE USING THIS EQUIPMENT. Failure to follow all instructions may result in electric shock, fire and/or serious personal injury.

## DIMENSIONS

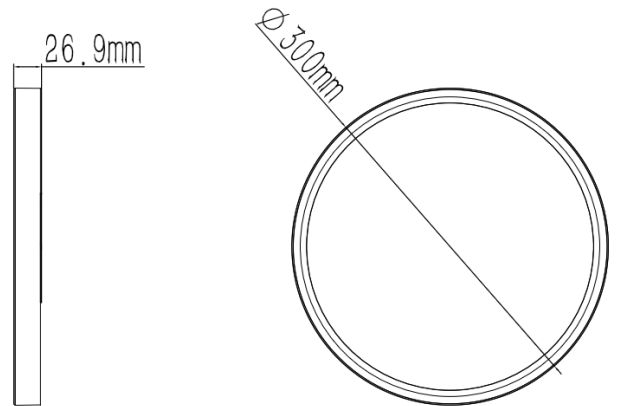
### ACL250S2P-3T

- 250mm Diameter
- 26.7mm Height



### ACL300S2P-3T

- 300mm Diameter
- 26.9mm Height



## CAUTION

Luminaires and their auxiliary equipment may pose a risk of fire or damage to property if not installed and maintained correctly.

## SAFETY WARNINGS

- Always read the instructions carefully before installation, failure to do this could result in damage to the product, property or harm to the installer.
- This product should be installed by a licensed electrician in accordance with the Australian / New Zealand Wiring Rules AS/NZS 3000.
- Do not immerse any part of the light fitting in water or any other liquids.
- Regularly inspect the light fitting to ensure that no damage has occurred, if damage is found cease use and replace.
- Do NOT attempt to modify this fitting in any way.
- The LED Driver and LED module is not replaceable.
- Do not stare directly into the lights. Prolonged exposure to bright lights could harm your eyes.
- This device should not be used by persons with reduced physical, sensory or mental capabilities or lack of experience and knowledge unless they have been given supervision or instruction concerning use of this appliance in a safe way and understand the hazards involved.
- Keep this product out of reach of children.
- This device is not intended for commercial, industrial or trade use.

## INSTALLATION

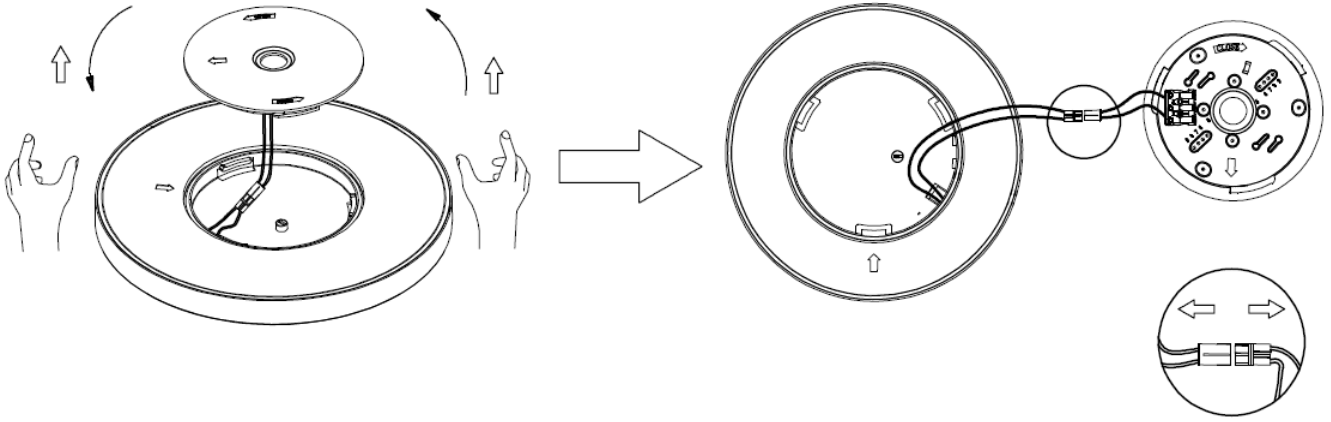
- It is recommended that this product be used on a circuit board protected by an Earth Leakage Circuit Breaker or Safety Switch.
- Allow suitable ventilation around the light fitting and do not cover with any material.
- Always install luminaires with the power switched off or isolated off to the area of installation.

### WATER INGRESS

This product is IP65 for Ceiling mount and IP44 for Wall Mount, this is because the product is IP65 from the front of the light and IP44 from back of light.

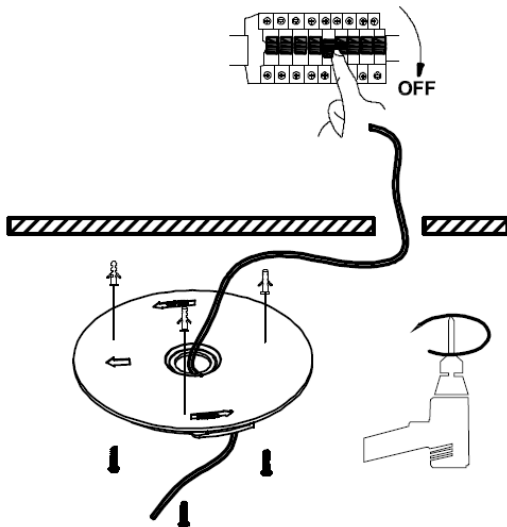
### STEP 1

Separate the base from the fitting by twisting. Disconnect the easy plug connection by pulling the two sides apart.



### STEP 2

Bring cable through the central hole and mount the base in the required location.



### STEP 3

Select Power and Colour Temperature.

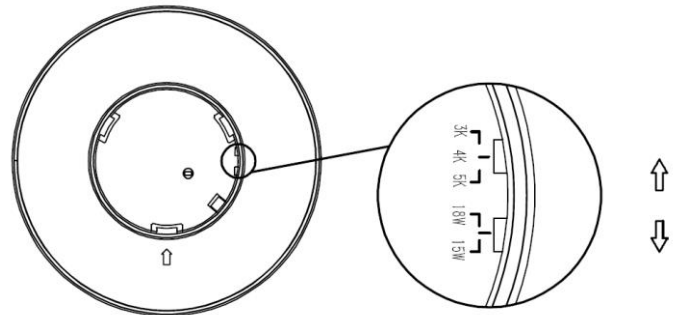
#### Power Output:

ACL250S2P-3T - 10/13 Watts

ACL300S2P-3T - 15/18 Watts

#### Colour Temperature:

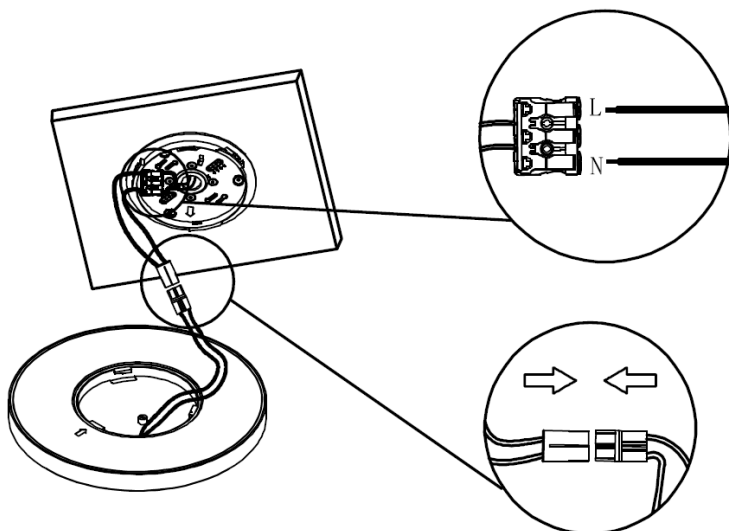
3000K / 4000K / 5000K



## INSTALLATION

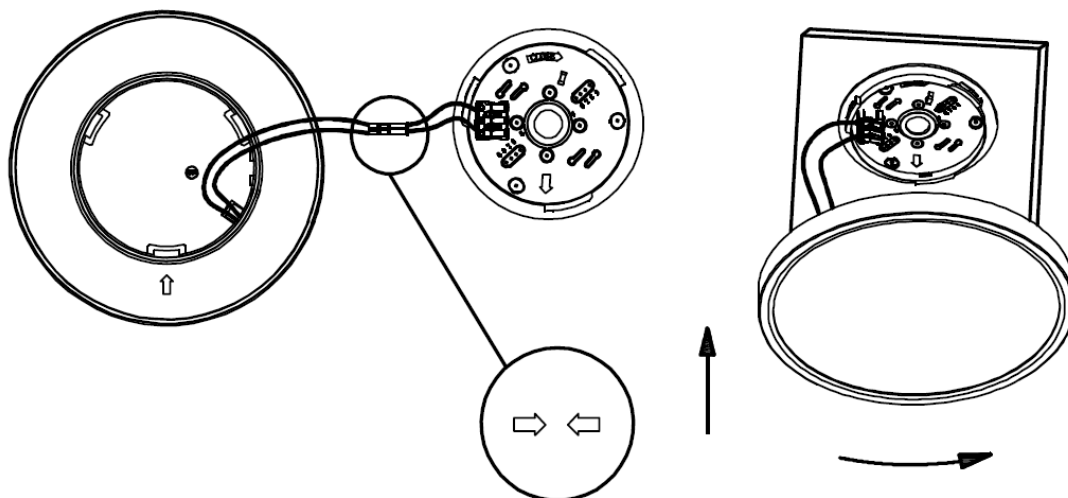
### STEP 4

1. Connect the wiring to the terminal block: a) Brown (Active) is connected to the contact marked 'A' or 'L'. b) Blue (Neutral) is connected to the contact marked 'N'.
2. Clip terminal block onto base.



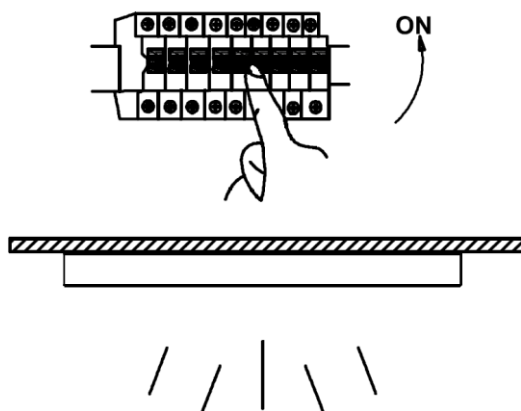
### STEP 5

Line up base and fitting using arrows indicated below and twist into a locked position.



### STEP 6

Energise the circuit at the mains then turn the wall switch "ON".



## DIMMING

This LED Ceiling light can be used in conjunction with Universal, Trailing and Leading Dimmers. It is the installers responsibility to ensure that the dimmer selected is compatible with the characteristics of the light.

## CARE AND CLEANING

To clean wipe exterior with a damp cloth  
Do not immerse in water.

## PROOF OF PURCHASE

Please retain your purchase receipt for all warranty claims

## WARRANTY

Your product is warranted against faults and manufacture when used in normal domestic use for a period of **three years**.

We undertake to replace this product at no charge if found to be defective due to a manufacturing fault during the warranty period. This warranty excludes damage caused by misuse, neglect, shipping accident, incorrect installation, or work carried out by anyone other than a qualified electrical service technician.

If your product fails to operate satisfactorily, please return it to the retailer from whom it was purchased to obtain a replacement product. You will need to produce satisfactory evidence of date of purchase. If the product is to be replaced (cannot be repaired) then that replacement will be of the same or similar product or accessory excluding packaging, instruction card etc.

In New Zealand product is covered by the Consumers Guarantee Act (1993). In accordance with the act consumers are advised that: The manufacturer does not undertake that repair facilities and parts are necessarily available for this product.

In Australia, our goods come with guarantees that cannot be excluded under the Australian Consumer Law. You are entitled to a replacement or refund for a major failure and compensation for any other reasonably foreseeable loss or damage. You are also entitled to have the goods repaired or replaced if the goods fail to be of acceptable quality and the failure does not amount to a major failure.

## KEEP IN A SAFE PLACE FOR FUTURE REFERENCE

**CDB  GROUP**

### **New Zealand**

PO Box 100-707

N.S.M.C

Auckland

Phone +64 (0)9 917 4000

Phone 0800 232 633

info@cdb.co.nz

### **Australia**

PO Box 574

South Morang

Victoria, 3752

Phone +61 (0)3 9336 4423

Phone 1300 465 324

info@cdbgoldair.com.au