

# Installation & Owner Manual

## AMBIUS SINGLE AND TRIPLE LED SPOTLIGHT

# AMBIUS

### Product & Technical Information

#### Models:

ASDLED561W / 5W  
ASDLED563W / 15W  
ASDLED561B / 5W  
ASDLED563B / 15W

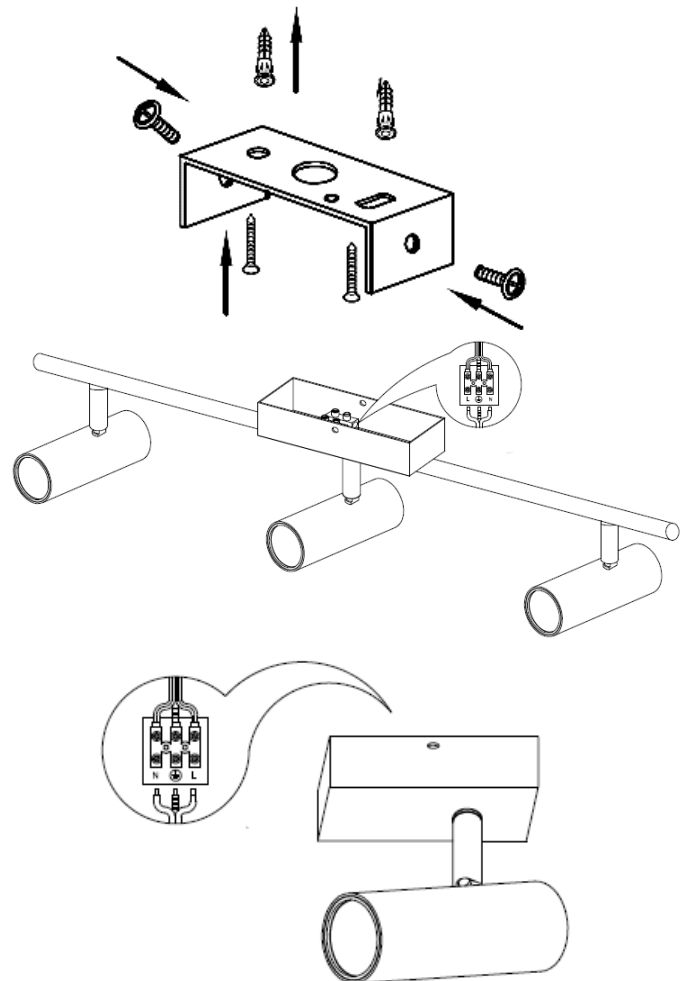
**Supply:** 220-240VAC 50Hz  
**Integrated LED**  
**Use:** Indoor Only

### Safety Warnings

- Always read the instructions carefully before installation, failure to do this could result in damage to the product, property or harm to the installer.
- This product must be installed by a licensed electrician in accordance with the Australian / New Zealand Wiring Rules AS/NZS 3000.
- It is recommended that this product be used on a circuit protected by an Earth Leakage Circuit Breaker or Safety Switch.
- Allow suitable ventilation around the light fitting and do not cover with any material.
- Do not immerse any part of the light fitting in water or any other liquids.
- Regularly inspect the light fitting to ensure that no damage has occurred, if damage is found cease use and replace.
- Do not attempt to modify this fitting in any way.
- The light source of this luminaire is not replaceable; when the light source reaches its end of life the whole luminaire will need to be replaced

### Installation Procedure

1. Ensure all packaging materials are fully removed prior to installation.
2. Ensure power to the circuit is isolated for the duration of the installation.
3. Select the appropriate mounting position, and run the wiring from the switch to this location.
4. Route the supply cable so that the wiring is able to connect to the terminal block.
5. Connect the wiring to the terminal block:
  - Brown (Active) is connected to the terminal marked 'A' or 'L'.
  - Blue (Neutral) is connected to the terminal marked 'N'
  - Green (Earth) is connected to the terminal marked  $\oplus$
6. Once the electrical connection is completed the spotlight can be installed in the chosen mounting position using the plate bar mounting bracket.
7. Energise the circuit at the mains.
8. Your light should now operate.



**Care and Cleaning**

To clean wipe exterior with a damp cloth  
Do not immerse in water.

**Proof of Purchase**

Please retain your purchase receipt for all warranty claims

**WARRANTY**

Your product is warranted against faults and manufacture when used in normal domestic use for a period of one year.

We undertake to replace this product at no charge if found to be defective due to a manufacturing fault during the warranty period. This warranty excludes damage caused by misuse, neglect, shipping accident, incorrect installation, or work carried out by anyone other than a qualified electrical service technician.

If your product fails to operate satisfactorily, please return it to the retailer from whom it was purchased to obtain a repair or replacement product. You will need to produce satisfactory evidence of date of purchase. If the product is to be replaced (cannot be repaired) then that replacement will be of the same or similar product or accessory excluding packaging, instruction card etc.

In New Zealand product is covered by the Consumers Guarantee Act (1993). In accordance with the act consumers are advised that: The manufacturer does not undertake that repair facilities and parts are necessarily available for this product.

In Australia, our goods come with guarantees that cannot be excluded under the Australian Consumer Law. You are entitled to a replacement or refund for a major failure and compensation for any other reasonably foreseeable loss or damage. You are also entitled to have the goods repaired or replaced if the goods fail to be of acceptable quality and the failure does not amount to a major failure.

**CDB Media Ltd**

PO Box 100-707  
N.S.M.C  
Auckland

Phone +64 (0)9 917 4000  
Phone 0800 232 633  
info@cdb.co.nz

**CDB Goldair**

PO Box 574  
South Morang  
Victoria, 3752

Phone +61 (0)3 9336 4423  
Phone 1300 465 324  
info@cdbgoldair.com.au