

AMBIUS

UP DOWN WALL LIGHTS INSTRUCTION MANUAL

MODELS: AWLCFLEDW - Q5040940
AWLCFLEDB - Q5040930

PRODUCT & TECHNICAL INFORMATION

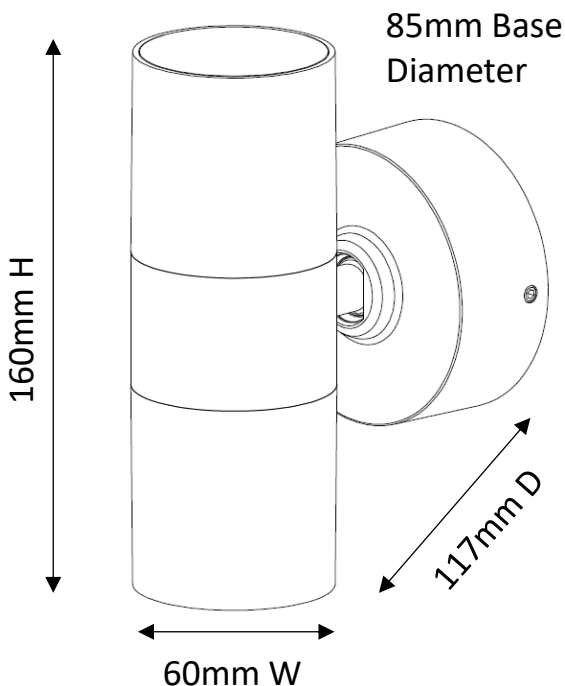
Wattage: 2 x 5W LED GU10
Lumens: 900 (450 per lamp)
Colour Temperature: 3000k Warm White
GU10 Lamp Base
(2x5W GU10 LED Bulbs included)
Material: Carbon Reinforced PC
Ingress Protection: IP65
Voltage: 220-240V ~ 50Hz
Use: Indoor & Outdoor (Permanent use)



SAFETY WARNINGS

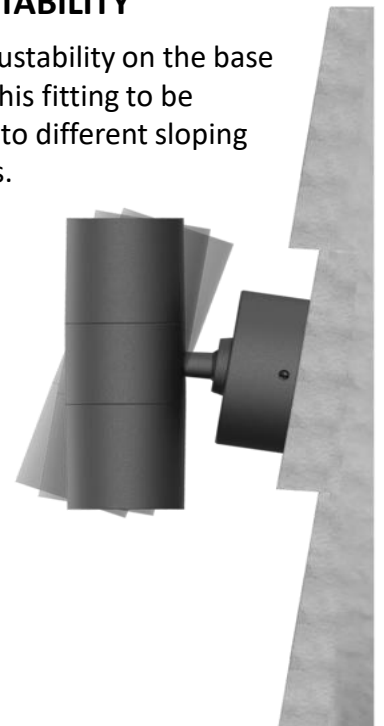
- Always read the instructions carefully before installation, failure to do this could result in damage to the product, property or harm to the installer.
- This product must be installed by a licensed electrician in accordance with the Australian / New Zealand Wiring Rules AS/NZS 3000.
- Allow suitable ventilation around the light fitting and do not cover with any material.
- Do not immerse any part of the light fitting in water or any other liquids.
- Regularly inspect the light fitting to ensure that no damage has occurred, if damage is found cease use and replace. Do not attempt to modify this fitting in any way.

DIMENSIONS



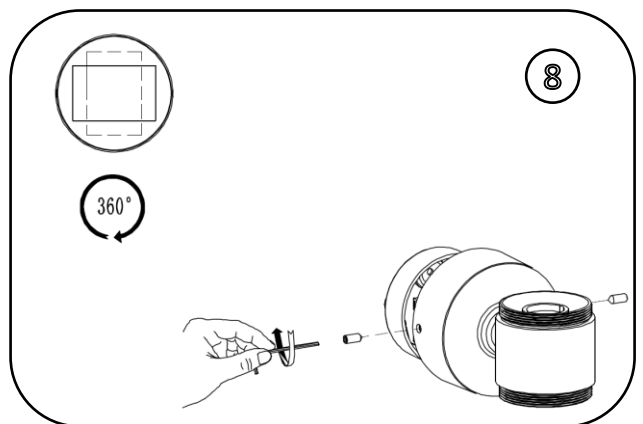
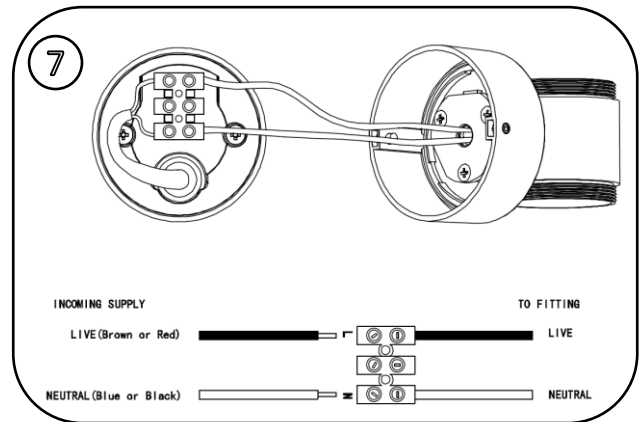
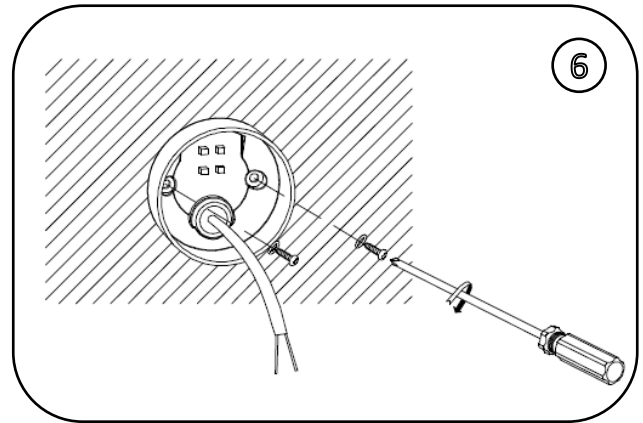
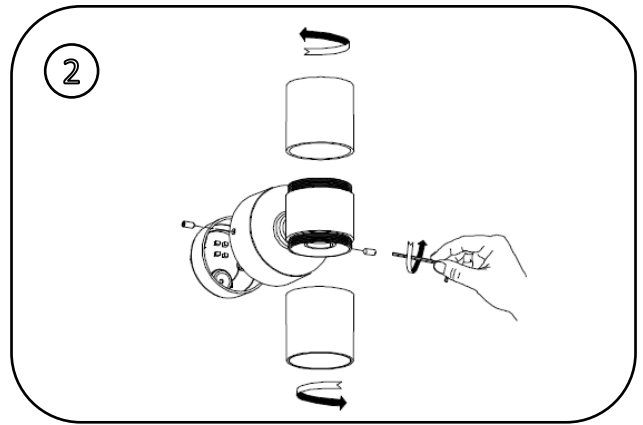
ADJUSTABILITY

The Adjustability on the base allows this fitting to be applied to different sloping surfaces.



INSTALLATION PROCEDURE

1. Ensure power to the circuit is isolated for the duration of the installation and all packaging materials are fully removed.
2. Select the appropriate mounting position.
3. Remove the base from the mounting plate by unscrewing the 2 grub screws on the sides.
4. Route the supply cable so that the wiring is able to enter the body through the grommet hole at the back of the mounting plate.
5. Pierce a hole through the rubber grommet and pass the wiring from the rear of the mounting plate.
6. Use the mounting plate as a template to mark the appropriate mounting holes. Ensure both the Grub Screws are installed into the mounting plate before attaching to the surface, they will be needed to attach the lamp body. Once done fit the mounting plate to the surface accordingly.
7. Connect the wiring to the terminal block. **Brown** (Active) is connected to the terminal marked 'A' or 'L'. **Blue** (Neutral) is connected to the terminal marked 'N'. Ensure that any connection made complies with New Zealand Electrical Wiring rules AS/NZS 3000. Connections should be secure.
Note: The centre terminal is not connected but can be used as a loop for earth.
8. Attach the lamp body to the mounting plate and secure loosely using the two grub screws. The lamp can be adjusted to any position 360° before tightening securely.
9. Energise the circuit at the mains then turn the individual switch 'ON'.
10. Your light should now operate.



CHANGING LAMPS

Removal

1. Ensure the power is off at the wall switch.
 2. Remove the cover.
 3. Allow the lamp sufficient time to cool before removing (if required).
 4. Unscrew and remove the lamp.
- ❖ Repeat steps 2-4 for models where there are two lamps

Replacement

1. Fit the replacement lamp.
 2. Wipe away any finger marks or dirt.
 3. Refit the cover.
- ❖ Repeat steps 1-3 for models where there are two lamps
4. Turn the wall switch on to test.



CARE AND CLEANING

To clean wipe exterior with a damp cloth. Do not immerse in water.

PROOF OF PURCHASE

Please retain your purchase receipt for all warranty claims.

WARRANTY

Your product is warranted against faults and manufacture when used in normal domestic use for a period of three years.

We undertake to replace this product at no charge if found to be defective due to a manufacturing fault during the warranty period. This warranty excludes damage caused by misuse, neglect, shipping accident, incorrect installation, or work carried out by anyone other than a qualified electrical service technician. This guarantee excludes liability for discoloration and/or delamination of paint or plastic.

If your product fails to operate satisfactorily, please return it to the retailer from whom it was purchased to obtain a replacement product. You will need to produce satisfactory evidence of date of purchase. If the product is to be replaced (cannot be repaired) then that replacement will be of the same or similar product or accessory excluding packaging, instruction card etc.

In New Zealand product is covered by the Consumers Guarantee Act (1993). In accordance with the act consumers are advised that: The manufacturer does not undertake that repair facilities and parts are necessarily available for this product.

KEEP IN A SAFE PLACE FOR FUTURE REFERENCE

CDB  **GROUP**

New Zealand

PO Box 100-707
N.S.M.C
Auckland

Phone +64 (0)9 917 4000
Phone 0800 232 633
info@cdb.co.nz

Australia

PO Box 574
South Morang
Victoria, 3752

Phone +61 (0)3 9336 4423
Phone 1300 465 324
info@cdbgoldair.com.au