



 500 Lumens Max

 2 x 5W

 IP65

4000K

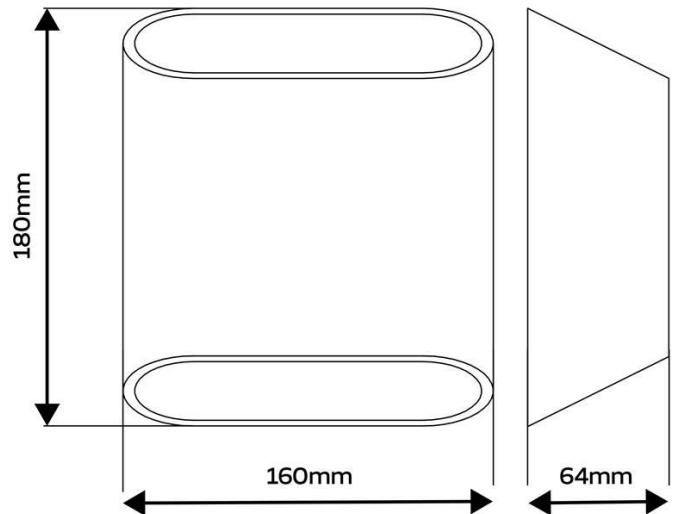
3200K

2700K

 3 YEARS WARRANTY

SPECIFICATIONS & DIMENSIONS

Wattage	2 x 5 Watt Integrated LEDs
Dimensions	H180 x W160 x D64mm
Colour Temp / Lumens	2,700K - 430 Lumens 3,200K - 480 Lumens 4,000K - 500 Lumens
CRI	80 CRI
Lifespan	L80 20,000 hours
Material	Aluminium + PC
IP Rating	IP65
Power Input	220-240VAC ~50Hz
Warranty	3 Years



PLEASE READ AND UNDERSTAND ALL WARNINGS, CAUTIONS AND OPERATING INSTRUCTIONS IN THIS MANUAL BEFORE USING THIS EQUIPMENT. Failure to follow all instructions may result in electric shock, fire and/or serious personal injury.

SAFETY WARNINGS

- Always read the instructions carefully before installation, failure to do this could result in damage to the product, property or harm to the installer.
- **This product should be installed by a licensed electrician in accordance with the Australian / New Zealand Wiring Rules AS/NZS 3000.**
- Do not immerse any part of the light fitting in water or any other liquids.
- Regularly inspect the light fitting to ensure that no damage has occurred, if damage is found cease use and replace.
- Do NOT attempt to modify this fitting in any way.
- The LED module is not replaceable.
- Do not stare directly into the lights. Prolonged exposure to bright lights could harm your eyes.
- This device should not be used by persons with reduced physical, sensory or mental capabilities or lack of experience and knowledge unless they have been given supervision or instruction concerning use of this appliance in a safe way and understand the hazards involved.
- Keep this product out of reach of children.
- This device is not intended for commercial, industrial or trade use.

BEFORE YOU BEGIN

- Ensure power to the circuit is isolated for the duration of the installation.
- Ensure all packaging materials are fully removed prior to installation.
- When selecting a mounting location, choose an area where you can firmly attach to a solid support structure i.e. timber nogs, concrete wall. We do not recommend installing into areas without a solid structure.
- Check your mounting location carefully for concealed cables or pipes before beginning. You must be careful not to drill into or pierce a cable or pipe inside the wall structure.
- Always ensure the supporting surface will safely support the combined weight of the attached equipment and all attached hardware and components.
- Always double check your measurements and work before proceeding.
- Use a spirit level.
- Check you have the right tools and safety equipment to complete the installation.

WATER INGRESS

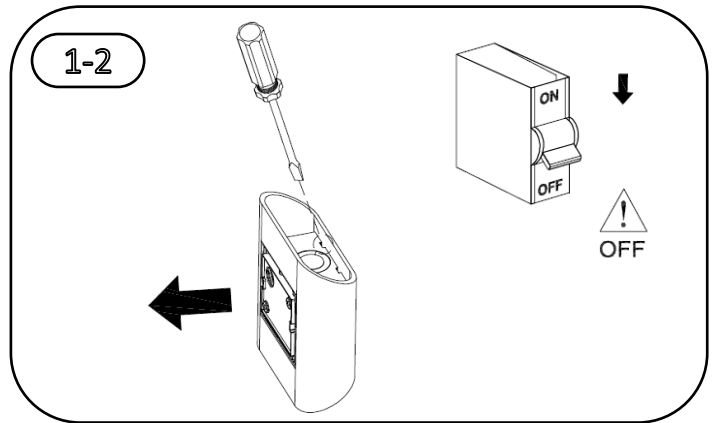
This product is rated IP65, and suitable for exterior installations. The product must not be exposed to conditions beyond IP65 protection, this includes during cleaning e.g. water blasting, chem wash etc.

CARE AND CLEANING

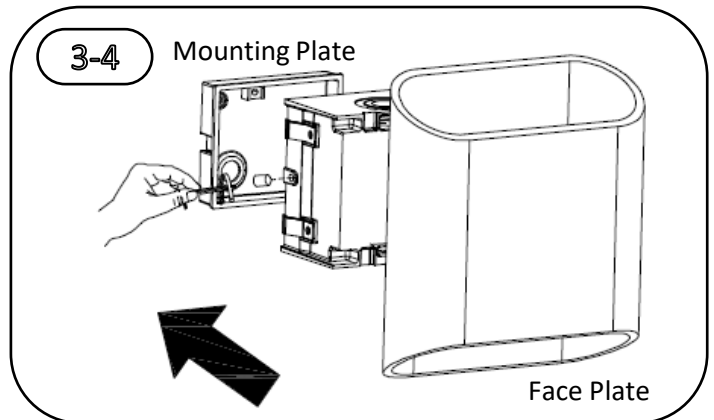
To clean wipe exterior with a slightly damp cloth.
Do not immerse in water.

INSTALLATION

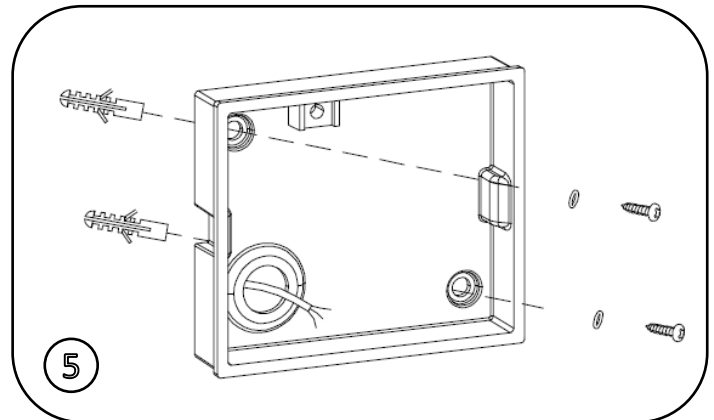
1. Ensure power to the circuit is isolated for the duration of the installation and all packaging materials are fully removed.
2. Remove the face plate from the light fixture using a screw driver to gently push apart.



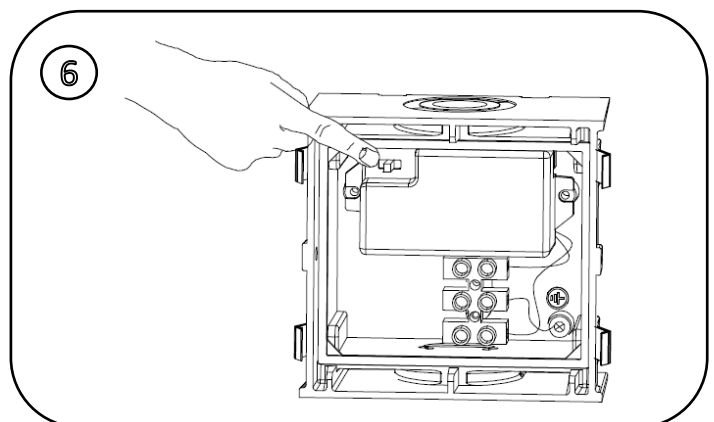
3. Separate the mounting plate by unscrewing the 2 grub screws on the sides.
4. Select the appropriate mounting position. Rigid Vertical position only.



5. Route the supply cable so that the wiring is able to pass through the grommet hole at the back of the mounting plate. Use the mounting plate as a template to mark the appropriate mounting holes. Fit the mounting plate to the surface using the appropriate hardware.



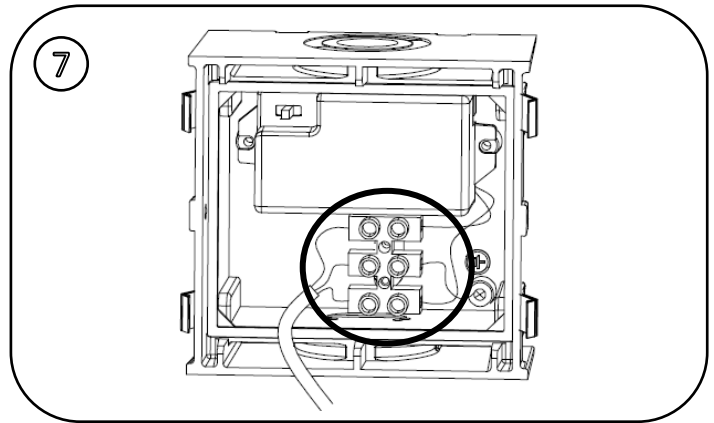
6. Select your preferred colour temperature: 3000K (Warm White), 4000K (Neutral White), or 5000K (Cool White).



INSTALLATION Cont...

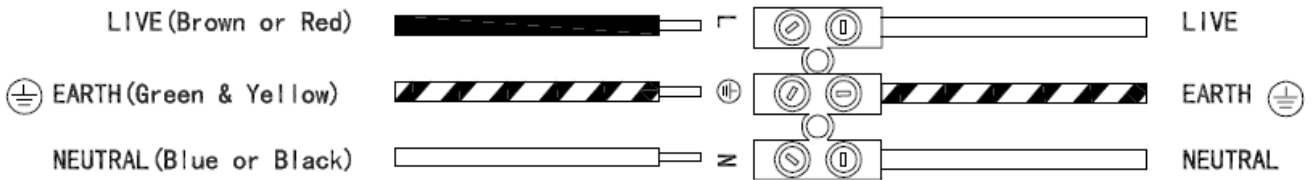
7. Connect the wiring to the terminal block. **Brown** (Active) is connected to the terminal marked 'A' or 'L'. **Blue** (Neutral) is connected to the terminal marked 'N'. **Green** (Earth) is connected to the terminal marked \oplus .

Ensure that any connection made complies with New Zealand Electrical Wiring rules AS/NZS 3000. Connections should be secure.

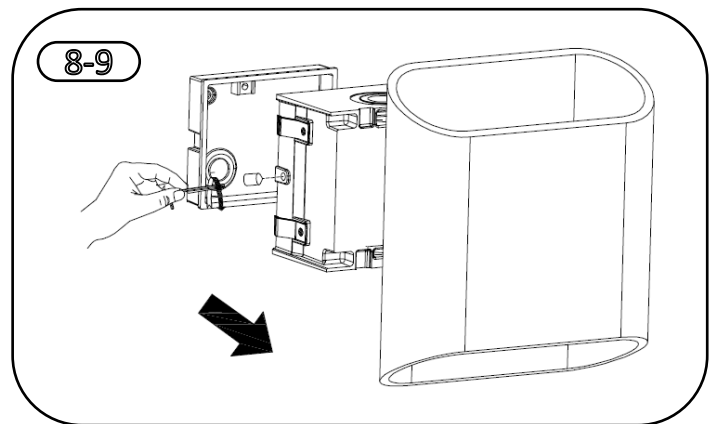


INCOMING SUPPLY

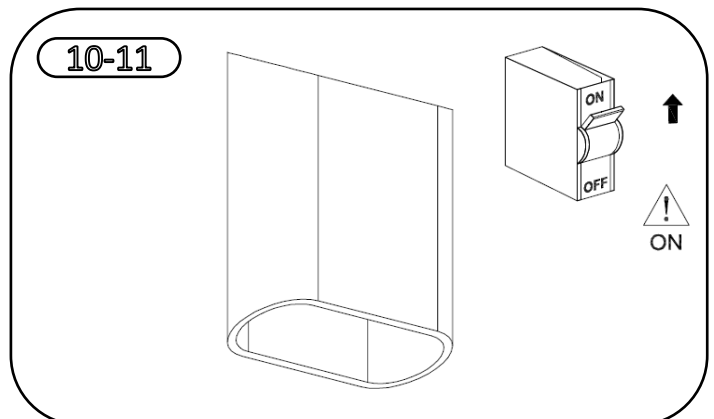
TO FITTING



8. Attach the light module to the mounting plate using the two grub screws previously removed.
9. Attach the face plate by gently pushing this on to the light module.



10. Energise the circuit at the mains then turn the individual switch 'ON'.
11. Your light should now operate.



DISPOSAL

When this fixture is no longer used or required it should be disposed of with household waste. We recommend completing this in the most environmentally friendly way. Please recycle where facilities exist in your local area. Check with your council authority for recycling advice. Recycling of packaging materials reduces the need for landfill. Please recycle packaging where possible. Check with your local council authority for recycling advice.

PROOF OF PURCHASE

Please retain your purchase receipt for all warranty claims

WARRANTY

Your product is warranted against faults and manufacture defects when used as per instruction for a period of **three years**.

We undertake to replace this product at no charge if found to be defective due to a manufacturing fault during the warranty period. This warranty excludes damage caused by misuse, neglect, shipping accident, incorrect installation, or work carried out by anyone other than a qualified electrical service technician. It also excludes liability for discolouration of paint or plastic, or any user serviceable parts. It does not confer any rights other than those expressly set out above and does not cover any claims for consequential loss or damage.

If your product fails to operate satisfactorily, please return it to the retailer from whom it was purchased to obtain a repair or replacement product. You will need to produce satisfactory evidence of date of purchase. If the product is to be replaced (cannot be repaired) then that replacement will be of the same or similar product or accessory excluding packaging, instruction card etc.

In New Zealand product is covered by the Consumers Guarantee Act (1993). In accordance with the act consumers are advised that: The manufacturer does not undertake that repair facilities and parts are necessarily available for this product.

In Australia, our goods come with guarantees that cannot be excluded under the Australian Consumer Law. You are entitled to a replacement or refund for a major failure and compensation for any other reasonably foreseeable loss or damage. You are also entitled to have the goods repaired or replaced if the goods fail to be of acceptable quality and the failure does not amount to a major failure.

KEEP IN A SAFE PLACE FOR FUTURE REFERENCE

CDB  GROUP

New Zealand

PO Box 100-707

N.S.M.C

Auckland

Phone +64 (0)9 917 4000

Phone 0800 232 633

info@cdb.co.nz

Australia

PO Box 574

South Morang

Victoria, 3752

Phone +61 (0)3 9336 4423

Phone 1300 465 324

info@cdbgoldair.com.au