

PRODUCT & TECHNICAL INFORMATION

Wattage: 10W

Max Lumens: 500 Lumens

Colour Temperature: 3000K, 4000K, 5000K

Integrated LED

Material: Aluminium with Opal PC
Diffuser

Voltage: 220-240V ~ 50Hz

Ingress Protection: IP65

Use: Outdoor (Permanent use)

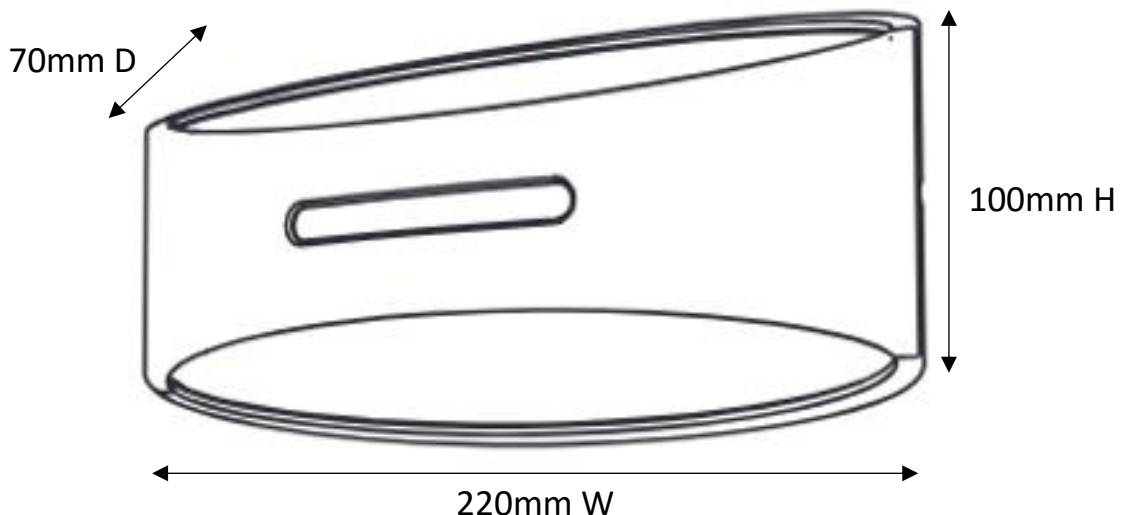
This product is rated IP65, and suitable for exterior installations. The product must not be exposed to conditions beyond IP65 protection, this includes during cleaning e.g. water blasting, chem wash etc.



SAFETY WARNINGS

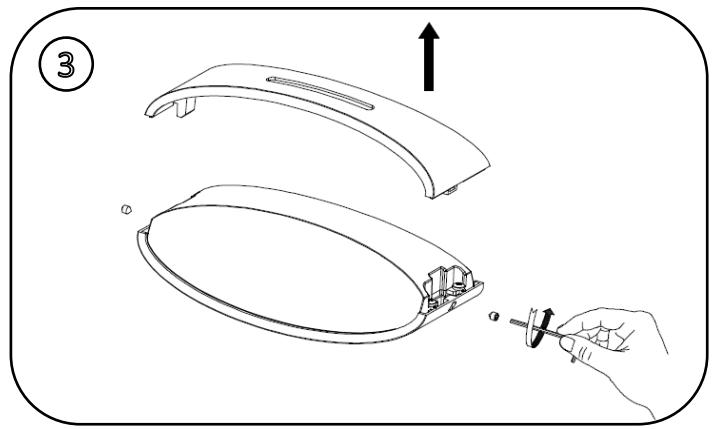
- Always read the instructions carefully before installation, failure to do this could result in damage to the product, property or harm to the installer.
- This product must be installed by a licensed electrician in accordance with the Australian / New Zealand Wiring Rules AS/NZS 3000.
- Allow suitable ventilation around the light fitting and do not cover with any material.
- Do not immerse any part of the light fitting in water or any other liquids.
- Regularly inspect the light fitting to ensure that no damage has occurred, if damage is found cease use and replace. Do not attempt to modify this fitting in any way.

DIMENSIONS

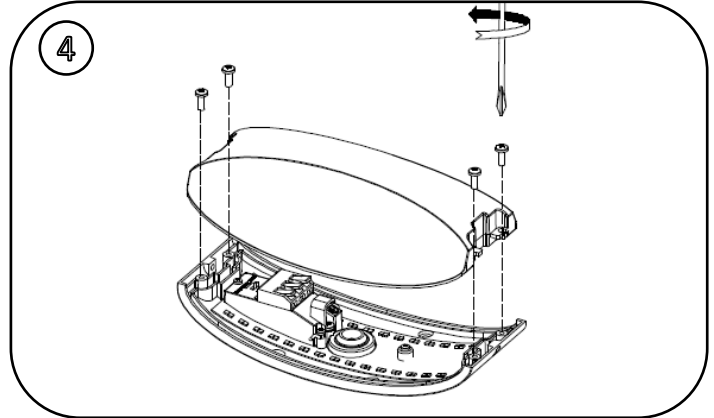


INSTALLATION PROCEDURE

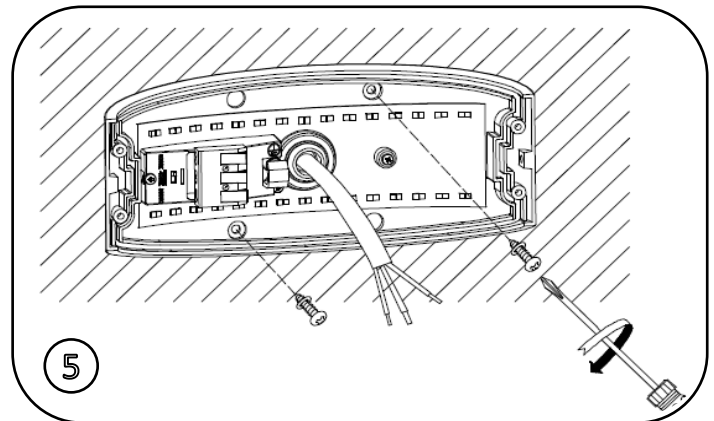
1. Ensure power to the circuit is isolated for the duration of the installation and all packaging materials are fully removed.
2. Select the appropriate mounting position.
3. Remove the face plate from the light fixture by unscrewing the 2 grub screws on the sides. Use the allen key provided.
4. Remove the diffuser from the base by unscrewing the 4 screws on the sides.



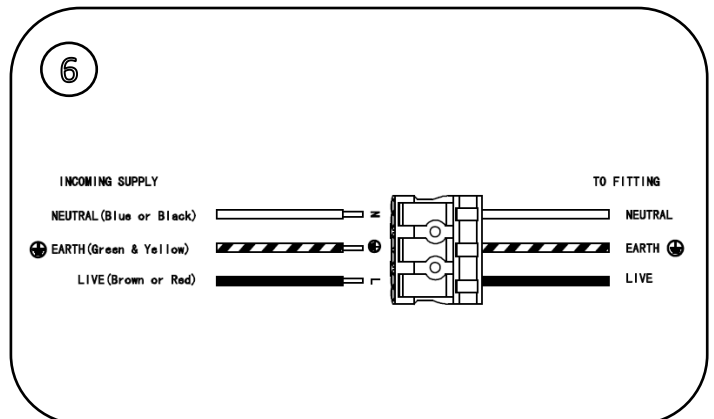
5. Route the supply cable so that the wiring is able to enter the body through the grommet hole at the back of the mounting plate. Pierce a hole through the rubber grommet and pass the wiring from the rear. Use the mounting plate as a template to mark the appropriate mounting holes. Fit the mounting plate to the surface accordingly.



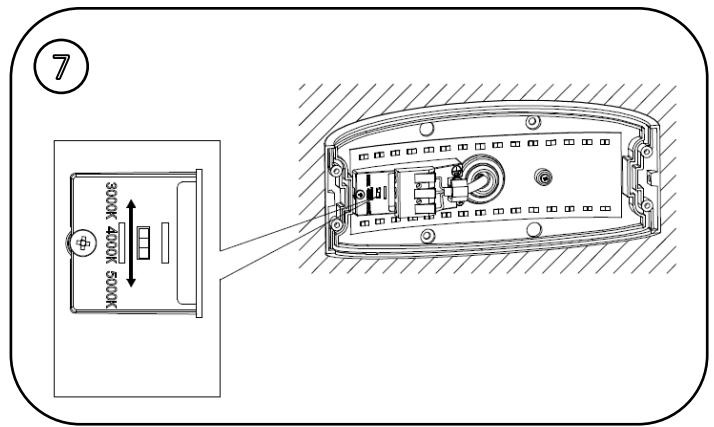
6. Connect the wiring to the terminal block. **Brown** (Active) is connected to the terminal marked 'A' or 'L'. **Blue** (Neutral) is connected to the terminal marked 'N'. **Green** (Earth) is connected to the terminal marked \oplus .



Ensure that any connection made complies with New Zealand Electrical Wiring rules AS/NZS 3000. Connections should be secure.

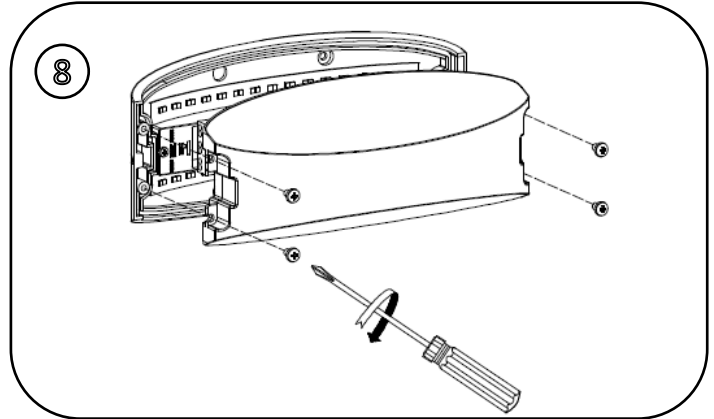


7. Select your preferred colour temperature. Warm White (3000K)/ Daylight (4000K)/ Cool White (5000K).

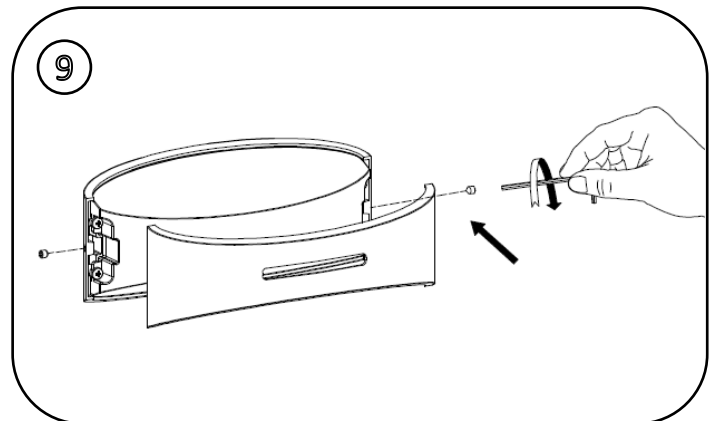


8. Attach the diffuser to the mounting plate with the 4 screws previously removed.

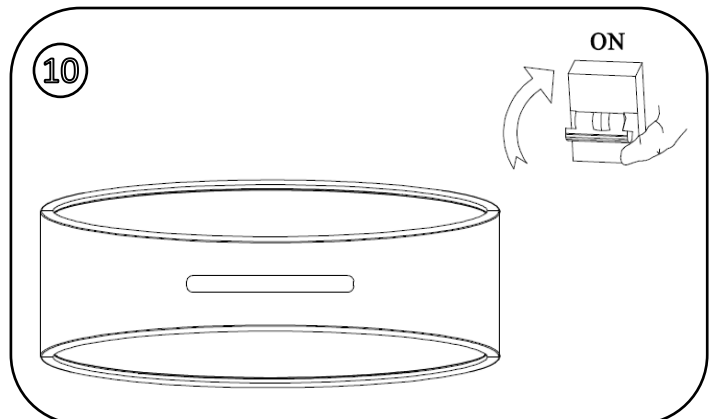
Note: Torque the four screws evenly to ensure weather tight seal.



9. Attach the face plate using the two grub screws previously removed.



10. Energise the circuit at the mains then turn the individual switch 'ON'.
11. Your light should now operate.



CARE AND CLEANING

All products must be thoroughly cleaned on a regular basis at intervals that are reflective of the installation environment, ensuring the optical performance, together with the electrical, mechanical and structural integrity as designed, is maintained throughout the service life of the product

Products installed in corrosive or salt laden environments require special consideration and extensive ongoing maintenance. A cleaning program should be adopted that maintains the design integrity of the product

Before cleaning ensure power to the circuit is isolated.

Clean regularly with a dry cloth. Do not use solvents, abrasive cleaning materials or solutions. Do Not submerge in liquid. Store in a clean, dry location – out of reach of children. Check regularly for damage, if found cease use immediately and contact a licensed electrician.

PROOF OF PURCHASE

Please retain your purchase receipt for all warranty claims.

WARRANTY

Your product is warranted against faults and manufacture defects when used as per instruction for a period of three years.

We undertake to replace this product at no charge if found to be defective due to a manufacturing fault during the warranty period. This warranty excludes damage caused by misuse, neglect, shipping accident, incorrect installation, or work carried out by anyone other than a qualified electrical service technician. It also excludes liability for discolouration of paint or plastic, or any user serviceable parts. It does not confer any rights other than those expressly set out above and does not cover any claims for consequential loss or damage.

If your product fails to operate satisfactorily, please return it to the retailer from whom it was purchased to obtain a repair or replacement product. You will need to produce satisfactory evidence of date of purchase. If the product is to be replaced (cannot be repaired) then that replacement will be of the same or similar product or accessory excluding packaging, instruction card etc.

In New Zealand product is covered by the Consumers Guarantee Act (1993). In accordance with the act consumers are advised that: The manufacturer does not undertake that repair facilities and parts are necessarily available for this product.

In Australia, our goods come with guarantees that cannot be excluded under the Australian Consumer Law. You are entitled to a replacement or refund for a major failure and compensation for any other reasonably foreseeable loss or damage. You are also entitled to have the goods repaired or replaced if the goods fail to be of acceptable quality and the failure does not amount to a major failure.

KEEP IN A SAFE PLACE FOR FUTURE REFERENCE

CDB  GROUP

New Zealand

PO Box 100-707
N.S.M.C
Auckland

Phone +64 (0)9 917 4000
Phone 0800 232 633
info@cdb.co.nz

Australia

PO Box 574
South Morang
Victoria, 3752

Phone +61 (0)3 9336 4423
Phone 1300 465 324
info@cdbgoldair.com.au